



WORTH AVENUE  
YACHTS

# BIG FISH



# BIG FISH

**Length:** 45.00 metres (147' 8")

**Beam:** 9.00 metres (29' 6")

**Draft:** 3.0 metres (9' 10")

**Number of Guests:** 10

**Number of Crew:** 10

**Built:** 2010

**Builder:** McMullen & Wing

**Naval Architect:** Gregory C Marshall

**Flag:** Marshall Islands

**Hull Construction:** Steel

**Hull Configuration:** Displacement

Air conditioning, Approved RYA water sports centre, Deck Jacuzzi, Gym/exercise equipment, Stabilisers at anchor, Stabilisers underway, WiFi connection on board

---

Big Fish is all about unique, thrilling, life-enriching experiences.

It's about taking you places that no other luxury yacht has gone before in a level of style, safety and comfort never seen before in a true expeditionary vessel.

It's about you and doing it your way.

Scuba dive the world's most spectacular reefs. Explore remote islands of intense natural beauty. Experience remote cultures

and see the ocean's most magnificent creatures. Sail, kayak, kite board and water ski with your family in the most stunning locations the planet has to offer.

Big Fish was built and staffed to provide a window to our beautiful world and create experiences that will live long in the memories, in the heart and in the soul of your family and friends.

Chill in the jacuzzi in a secluded tropical bay. Enjoy delectable, lovingly prepared cuisine any time, anywhere...on your own private deck, the infinity terraces of the dining salon or even on the folding stern beaches as the sun sets and the underwater lights create a vista of marine serenity and attract myriad schools of fish to your feet.

Big Fish was designed, built and staffed to provide a true yachting experience, not the stuffy formality offered by most charter vessels, but the relaxed, adventurous, spontaneous kind of cruising that has always been at the heart of man's passion for the sea. Big Fish can, and will, open up a whole new world of undiscovered pleasures.

If previous charters have left you wanting more, Big Fish delivers on every front. Stunning contemporary luxury, innovation at every turn, and a delightful, fun-loving, thoroughly professional crew who are focused entirely on your

# KEY FEATURES

- 1 Winner of numerous awards
- 2 Luxury expedition vessel fully equipped to circumnavigate the globe
- 3 Master cabin with floor-to-ceiling windows, 270° views & private deck area
- 4 Fold-down terraces on the main deck and crow's nest with 360° views
- 5 22ft video wall, fully equipped gym
- 6 Fold-down bulwarks on either side of the lower deck
- 7 7.9m custom tender with 200nm range
- 8 Huge array of toys including kitesurfing equipment, game fishing gear, underwater camera & decompression chamber





At Anchor Side View



Main Salon



Interior Dining



Master State Room 1



Master State Room 2



Master Bathroom



Master Bathroom



Master Terrace





Main Deck Video Wall



Guest Stateroom



Guest Bathroom



Jacuzzi & Sundeck



Sundeck



Look-Out Lounge/Observation Pod



Alternative Seating



On-Board Massage





Superb Tender - Tripple Ripple



Dedicated GYM



Big Fish



Big Fish Side On Running



GENERAL ARRANGEMENT



KEY

- |              |                |
|--------------|----------------|
| 01 DECK      | 06 DECK CANNES |
| 02 DECK AREA | 07 CROW AREA   |
| 03 WAREHOUSE | 08 SUN DECK    |

BIG FISH GA

# SPECIFICATIONS

## ACCOMMODATION

**Number of Guests:** 10

**Number of Cabins:** 5

**Cabin Configuration:** 5 Double, 1 Convertible

**Bed Configuration:** 2 King, 3 Queen

## EQUIPMENT

**Engines:** Caterpillar 3508B DI-TA 1050hp @ 1600rpm

Two Kilopak 125 Kilowatt generators

**Cruising Speed:** 10 knots

**Fuel Consumption:** 200 Litres/Hr

## WATERSPORTS

**Tenders + Toys:** WATERSPORTS:

1 x 7.8m Custom M & W Tender (200+mile range)

10 x sets of dive gear

1 x 4.2m Explorer RIB with 40hp outboard

2 x wake boards

4 x kayaks

7 x paddle boards

1x Water Ski & Single Ski

Snorkelling Gear

5x Under Water Camera

2 x Sea doo Jet Ski GTI130

2 x towing inflatable toys

FISHING GEAR:

4 x 80W Tiagra Big Game Fishing

4 x 30W Tiagra Big Game Fishing

2 x 50W Tiagra Big Games Fishing

4 x Cannon downriggers

4 x bait runners cast fishing

DIVING:

Big Fish has a large supply of O2 on board for re-breathers and safety (3 x 120 [cubic feet] tanks plus DAN portable units)

The commercial dive compressor is "water cooled" for continuous service.

4 x Nautilus Lifeline VHF-GPS Radios for divers

([www.divealert.com](http://www.divealert.com))

2 x DJI Phantom drones

GYM:

TRAINING DVD'S

- Kettle Bell work out
- Hammer and Chisel (strength and cardio)
- Insanity (cardio)
- T-25 (Cardio)
- Yoga (Various styles)
- Pilates (Various styles)

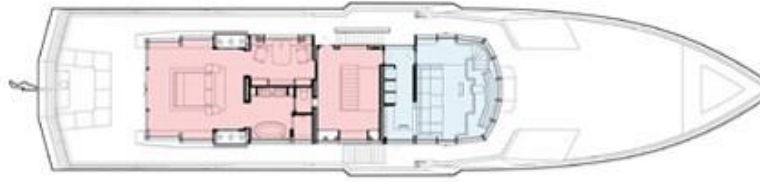


# LAYOUT

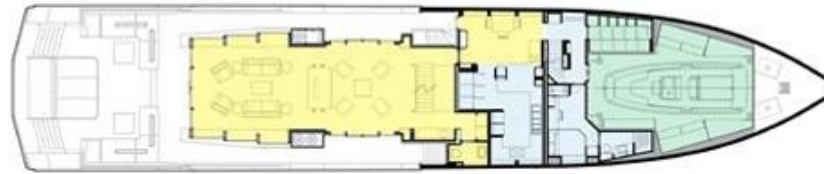
- Thai Chi
- Stand Up paddle boarding
- TRX essentials

## BIG FISH

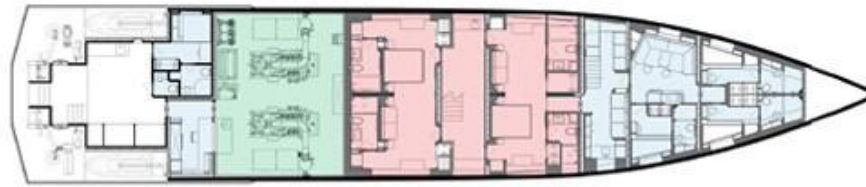
### BRIDGE DECK



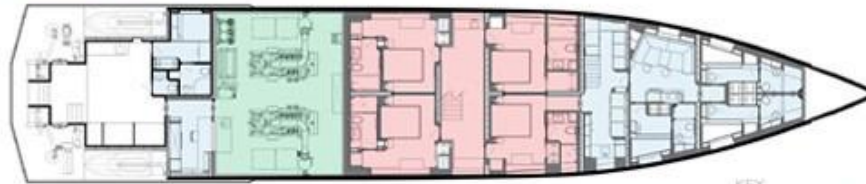
### MAIN DECK



### LOWER DECK (2 VIP CABIN LAYOUT)



### LOWER DECK (4 GUEST CABIN LAYOUT)



#### KEY

- OWNER / GUEST
- LOUNGE / DINING
- CREW / BRIDGE
- TECHNICAL



Worth Avenue Yachts  
150 Worth Avenue , Suite 136  
United States, Palm Beach, FL, 33480  
Tel: +19547035737  
[www.WorthAvenueYachts.com](http://www.WorthAvenueYachts.com)

## **Disclaimer**

This document is not contractual. All specifications are given in good faith and offered for informational purposes only. The publisher and company do not warrant or assume any legal liability or responsibility for the accuracy, completeness, or usefulness of any information and/or images displayed. Yacht inventory, specifications and charter prices are subject to change without prior notice. None of the text and/or images used in this brochure may be reproduced without written consent from the publisher.